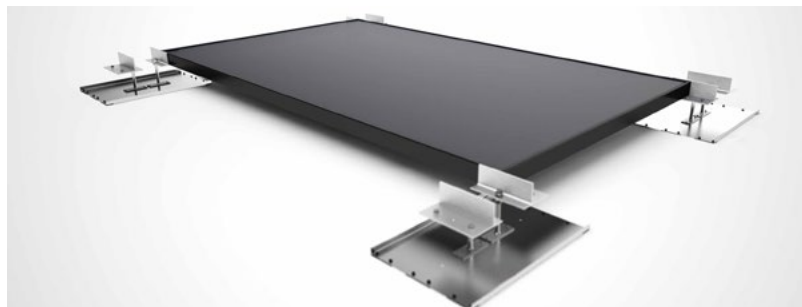
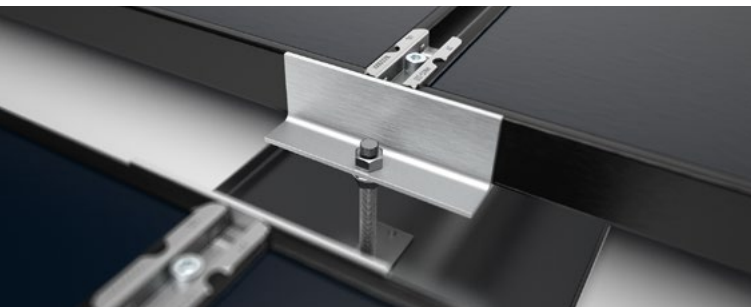


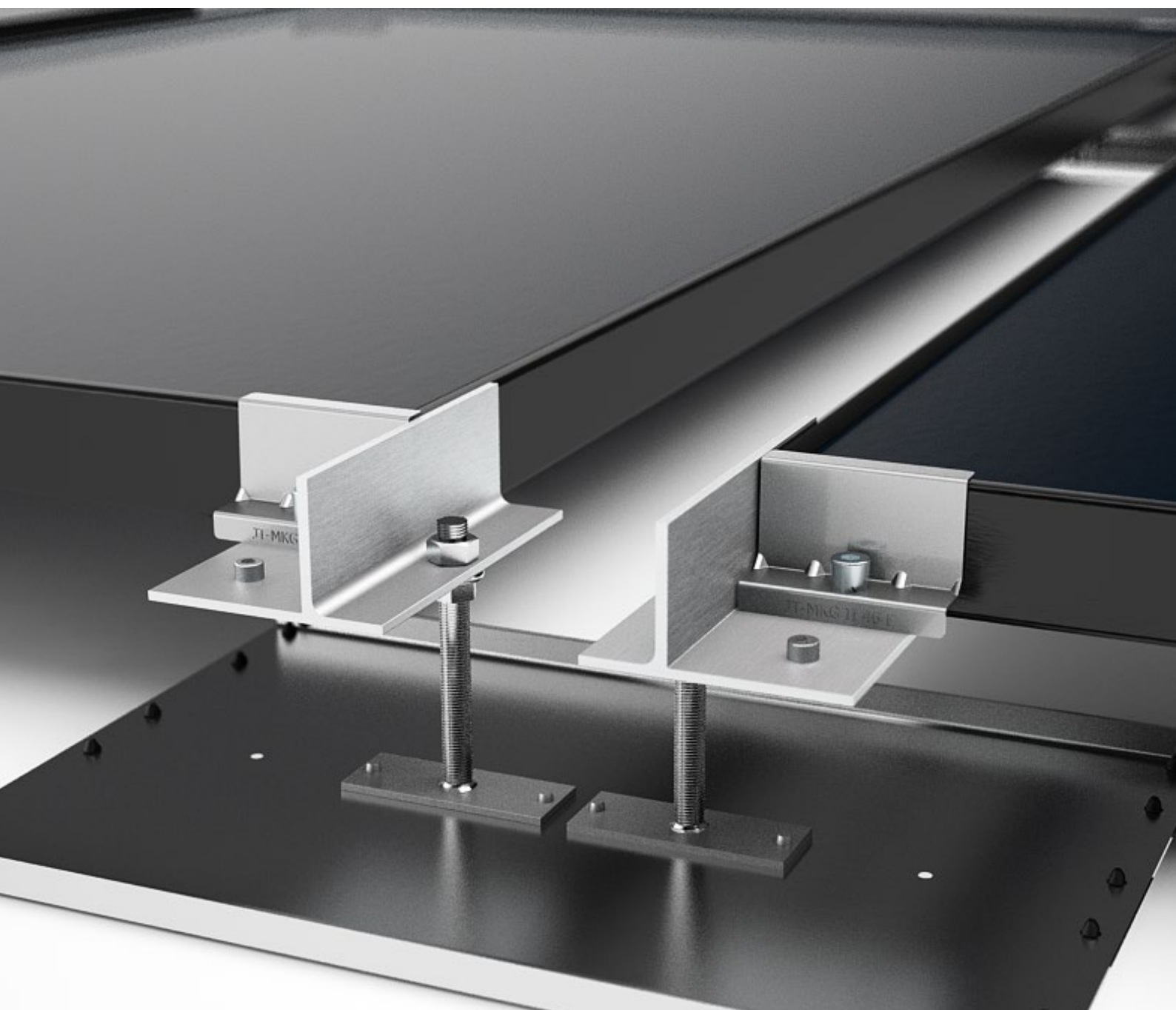
# PlanTec Universal roof parallel fast, safe, cost-efficient

---

## YOUR ADVANTAGES

- Extreme light aluminium construction
- No perforation of the roof membrane
- Fast and easy assembly by the use of less mounting parts
- No need for special tools
- Optimal protection of the roof membrane by the use of pre-assembled edge protection
- Wind channel tests have been implemented successfully by the institute for aerodynamic (I.F.I.)
- Low ballast due to new arrangements of the modules
- Every connection material is of high quality stainless steel A2 (1.4301)





TECHNICAL DATA - PlanTec Universal roof parallel	
Suitable roof types	Flat roofs
Usable module types	Every common framed module (approx. 1.6 m x 1 m)
Material	Stainless steel A2 (1.4301) and Aluminum
Module inclination	Roof parallel
Roof inclination	max. 5°
Basic width	Approx. 2375 mm